

# shade aide®

SAVE UP TO 30% ON SELECT SHADE AIDE®  
MODELS WHEN YOU BUY IN BULK!  
NOW THROUGH MAY 30, 2025\*



**LARGE**



**MEDIUM**



**SMALL**

**SPRINGING UP  
SAVINGS!**

SAVE BIG ON MANY SELECT  
SHADE AIDE® MODELS  
SEE MORE ON PAGES 6-10

\*Prices Subject to Change without Notice

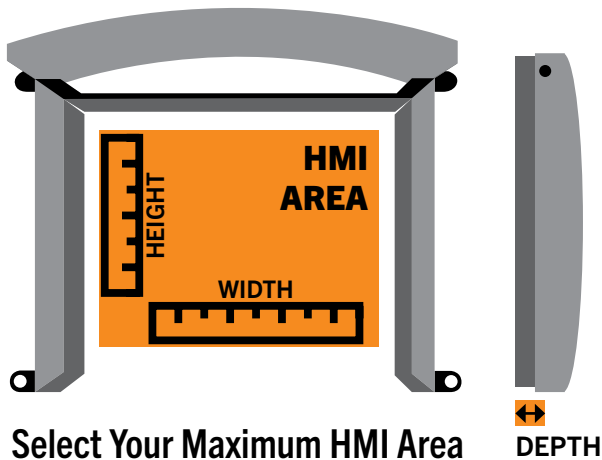


# MEASURING GUIDE

## WHY BUY A ONE-SIZE-FITS-ALL HMI PROTECTOR?

The **SHADE AIDE**® HMI protector comes in many different sizes and colors. Built for rugged, industrial environments, the **SHADE AIDE**® is sure to fit your HMI.

## NOT SURE WHAT SIZE **SHADE AIDE**® TO GET?



Measure your HMI's length and width, making sure to measure edge to edge from the plastic casing of the HMI.

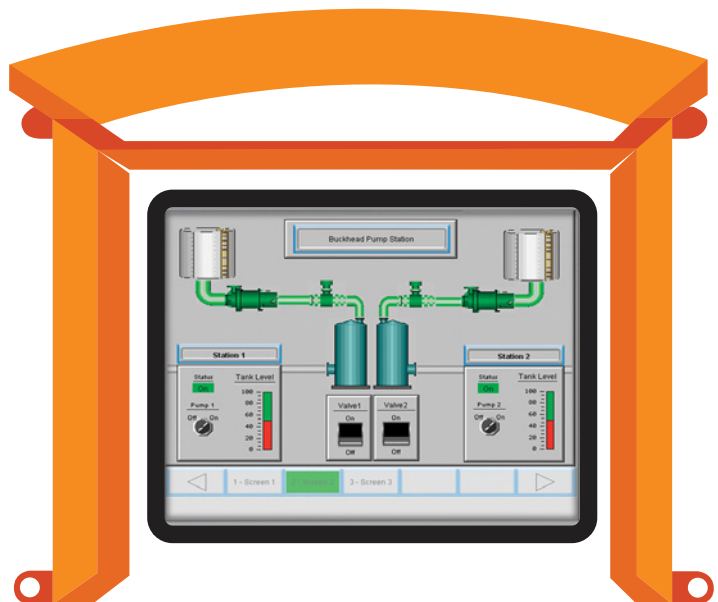
Account for how far the HMI face sticks out from the control panel to determine the depth.

Check what is behind the door. Your measurement should make it so none of the holes you drill will run into wiring or buttons on the back!

Find the distance from your HMI to any buttons or labels on the panel door. You will need 9/16" or 15mm clearance.

Find the **SHADE AIDE**® that is closest to your measurements and you're ready to order!

See page 3 for model sizes.



# SIZES & COLORS

## MINI | SMALL | MEDIUM

Model Name	NEMA 4/IP66 PN	NEMA 4X/IP66 PN	Maximum HMI Area - US	Maximum HMI Area - Metric
Mini <sup>1</sup>	H87A556-4	H87A556-4X <sup>4</sup>	5" W x 2.875" H x 1" D	127mm W x 73mm H x 25mm D
Mini Tall <sup>4</sup>	TBA	TBA	5" W x 12" H x 1" D	127mm W x 304mm H x 25mm D
Modified Mini <sup>1</sup>	H87A570-4	H87A570-4X <sup>4</sup>	5.75" W x 3.9375" H x 1" D	146mm W x 100mm H x 25mm D
Mini Square <sup>1</sup>	H87A575-4	H87A575-4X <sup>4</sup>	7" W x 7.0625" H x 1" D	177mm W x 179mm H x 25mm D
Small <sup>2</sup>	H87A379-4	H87A379-4X	9.875" W x 7.4375" H x 1" D	250mm W x 188mm H x 25mm D
Medium <sup>1</sup>	H87A582-4	H87A582-4X <sup>4</sup>	12" W x 9.0625" H x 1" D	304mm W x 230mm H x 25mm D

## LARGE | X-LARGE | XX-LARGE

Model Name	NEMA 4/IP66 PN	NEMA 4X/IP66 PN	Maximum HMI Area - US	Maximum HMI Area - Metric
Large Square <sup>1</sup>	H87A584-4	H87A584-4X <sup>4</sup>	11.5" W x 11.5625" H x 1" D	292mm W x 293mm H x 25mm D
Large Modified <sup>1</sup>	H87A548-4	H87A548-4X	13.875" W x 11.4375" H x 1" D	352mm W x 290mm H x 25mm D
Large <sup>2</sup>	H87A485-4	H87A485-4X	15.875" W x 11.4375" H x 1" D	403mm W x 290mm H x 25mm D
Large Deep <sup>1</sup>	H87A555-4	H87A555-4X <sup>4</sup>	15.875" W x 11.4375" H x 2" D	403mm W x 290mm H x 50mm D
X-Large Modified <sup>3</sup>	H87A578-4	H87A578-4X <sup>4</sup>	17" W x 14.8125" H x 1" D	431mm W x 376mm H x 25mm D
X-Large <sup>2</sup>	H87A503A-4	H87A503A-4X	19.875" W x 14.4375" H x 1" D	504mm W x 366mm H x 25mm D
X-Large X-Tall <sup>1</sup>	H87A498-4	H87A498-4X	19.875" W x 18.4375" H x 1" D	504mm W x 468mm H x 25mm D
X-Large Long <sup>1</sup>	H87A503-LONG-4	H87A503-LONG-4X	22.5" W x 14.4375" H x 1" D	571mm W x 366mm H x 25mm D
XX-Large <sup>4</sup>	H87A580-4	H87A580-4X	24.125" W x 16.0625" H x 1" D	612mm W x 407mm H x 25mm D

## MEGA

Model Name	NEMA 4/IP66 PN	NEMA 4X/IP66 PN	Maximum HMI Area - US	Maximum HMI Area - Metric
Mega <sup>4</sup>	H87A526A-4	H87A526A-4X	28.5" W x 24.875" H x 13.5625" D	723mm W x 631mm H x 344mm D
Mega Shallow <sup>1</sup>	H87A526D-4	H87A526D-4X <sup>4</sup>	28.5" W x 24.875" H x 1" D	723mm W x 631mm H x 25mm D

## HIGH-SPEED (for HMIs on Vehicles)

Model Name	NEMA 4/IP66 PN	NEMA 4X/IP66 PN	Maximum HMI Area - US	Maximum HMI Area - Metric
X-Large High-Speed <sup>4</sup>	H87A503C-4	H87A503C-4X	19.875" W x 14.4375" H x 1" D	504mm W x 366mm H x 25mm D
Mega Shallow High-Speed <sup>4</sup>	H87A526E-4	H87A526E-4X	28.5" W x 24.875" H x 1" D	723mm W x 631mm H x 25mm D

### Custom Order

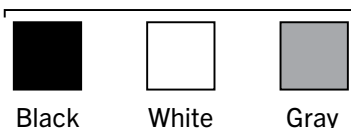
Any Size, Any Color + SST



Order any **SHADE AIDE®** in the custom color of your choice!

### NEMA 4/IP66

Powder-Coated Aluminum



Black

White

Gray

### NEMA 4X/IP66

Stainless Steel



SST

### SCAN HERE



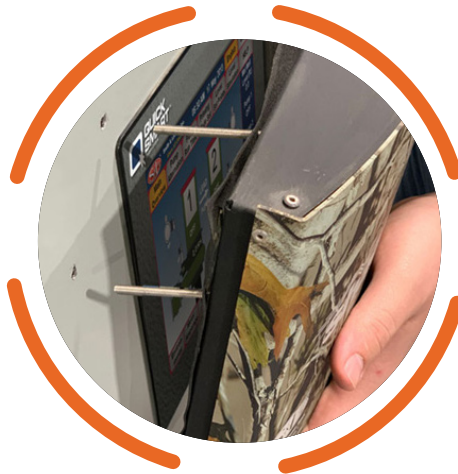
<sup>1</sup> Available in stock in black.

<sup>2</sup> Available in stock colors black, white, gray and stainless steel.

<sup>3</sup> Available in stock colors black, white or gray. Contact us for more information.

<sup>4</sup> Not in stock and will be custom ordered. Contact us for more information.

# EASY INSTALLATION



**Step 1: Mark holes**



**Step 2: Drill holes**



**Step 3: Install SHADE AIDE®**



**Step 4: Test opening and closing**

**YOU NOW HAVE  
*INSTANT* SHADE.**

# CUSTOMIZE YOUR **SHADE AIDE®**

For a look as unique as your business!



Bring your **SHADE AIDE®** to life with logo customization and endless color options.  
Get your order started when you contact us at [info@shadeaide.com](mailto:info@shadeaide.com).

# SPRINGING UP SAVINGS!

**UP TO  
25% OFF\***

## SHADE AIDE® SMALL

### SMALL ALUMINUM

9.875" W x 7.4375" H x 1" D

250mm W x 188mm H x 25mm D

Now available in powder-coated aluminum, the sleek, black, white or gray **SHADE AIDE®** by **Smith & Loveless®** will keep even your small screens viewable and free from sun damage, dust and water with **NEMA 4** and **IP66** protection.

Interested in adding your signature touch?  
Email [info@shadeaide.com](mailto:info@shadeaide.com) to get started  
on a quote to add your custom logo!



**SAVE BIG ON SELECT SHADE AIDE® MODELS MARCH 3 THROUGH MAY 30, 2025\***

PART NUMBER	MODEL	COLOR	QTY DISCOUNT	DISCOUNT	QTY DISCOUNT	DISCOUNT
H87A379-4	SMALL	BLACK	1 TO 9	10%	10+	25%
H87A379-GY1-4	SMALL	GRAY	1 TO 5	10%	6+	20%
H87A379-WT1-4	SMALL	WHITE	1 TO 5	10%	6+	20%



# shade aide®

**UP TO  
15% OFF\***



**SAVE BIG ON SELECT  
SHADE AIDE® MODELS  
THROUGH MAY 30, 2025\***

## SHADE AIDE® MEDIUM

With its easy-to-use design and snug fit, this medium-sized **SHADE AIDE®** is the ideal choice for anyone looking to keep their HMI screen in top condition with its easy-to-view technology.

### **MEDIUM ALUMINUM**

12" W x 9.0625" H x 1" D

304mm W x 230mm H x 25mm D

**SAVE BIG ON SELECT SHADE AIDE® MODELS MARCH 3 THROUGH MAY 30, 2025\***

PART NUMBER	MODEL	COLOR	QTY DISCOUNT	DISCOUNT	QTY DISCOUNT	DISCOUNT
H87A582-4	MEDIUM	BLACK	1 TO 5	5%	5+	15%

\*Prices Subject to Change without Notice

EMAIL US AT [INFO@SHADEAIDE.COM](mailto:INFO@SHADEAIDE.COM)

# BEST DEALS!

## SHADE AIDE® LARGE

### LARGE ALUMINUM

15.875" W x 11.4375" H x 1" D  
403mm W x 290mm H x 25mm D

Now available in powder-coated aluminum, the sleek, black, white or gray **SHADE AIDE®** by **Smith & Loveless®** will keep your large screens protected, viewable and free from sun damage, dust and water with **NEMA 4** and **IP66** protection.

Interested in adding your signature touch?  
Email [info@shadeaide.com](mailto:info@shadeaide.com) to get started on a quote to add your custom logo!

**UP TO  
25% OFF\***

**SAVE BIG ON SELECT SHADE AIDE® MODELS MARCH 3 THROUGH MAY 30, 2025\***

PART NUMBER	MODEL	COLOR	QTY DISCOUNT	DISCOUNT	QTY DISCOUNT	DISCOUNT
H87A485-4	LARGE	BLACK	1 TO 9	5%	10+	15%
H87A485-GY1-4	LARGE	GRAY	1 TO 5	10%	6+	20%
H87A485-WT1-4	LARGE	WHITE	1 TO 5	10%	6+	25%



**BULK BUYS.  
BULK SAVINGS.**

# SHADE AIDE® X-LARGE

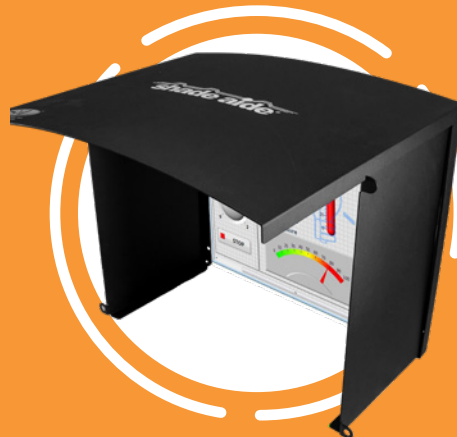
## X-LARGE ALUMINUM

19.875" W x 14.4375" H x 1" D

504mm W x 366mm H x 25mm D

Now available in powder-coated aluminum, the sleek, black, white or gray **SHADE AIDE®** by **Smith & Loveless®** can keep your extra large screens viewable and free from sun damage, dust and water with **NEMA 4** and **IP66** protection.

Interested in adding your signature touch?  
Email [info@shadeaide.com](mailto:info@shadeaide.com) to get started  
on a quote to add your custom logo!



**UP TO  
20% OFF\***

**SAVE BIG ON SELECT SHADE AIDE® MODELS MARCH 3 THROUGH MAY 30, 2025\***

PART NUMBER	MODEL	COLOR	QTY DISCOUNT	DISCOUNT	QTY DISCOUNT	DISCOUNT
H87A503A-4	X-LARGE	BLACK	1 TO 9	10%	10+	20%
H87A503A-GY1-4	X-LARGE	GRAY	1 TO 5	10%	6+	20%
H87A503A-WT1-4	X-LARGE	WHITE	1 TO 5	10%	6+	20%

\*Prices Subject to Change without Notice

EMAIL US AT [INFO@SHADEAIDE.COM](mailto:INFO@SHADEAIDE.COM)

# SPECIALTY MODELS

## SHADE AIDE® X-LARGE X-TALL

X-LARGE X-TALL ALUMINUM

Part #: H87A555-4

15.875" W x 11.4375" H x 2" D

403mm W x 290mm H x 50mm D



**UP TO  
15% OFF\***

**SAVE BIG ON SELECT SHADE AIDE® MODELS MARCH 3 THROUGH MAY 30, 2025\***

PART NUMBER	MODEL	COLOR	QTY DISCOUNT	DISCOUNT	QTY DISCOUNT	DISCOUNT
H87A498-4	X-LARGE X-TALL	BLACK	1 TO 5	10%	5+	15%

\*Prices Subject to Change without Notice



## SHADE AIDE® X-LARGE MODIFIED

X-LARGE MODIFIED ALUMINUM

17" W x 14.8125" H x 1" D

431mm W x 376mm H x 25mm D

**UP TO  
30% OFF\***

**SAVE BIG ON SELECT SHADE AIDE® MODELS MARCH 3 THROUGH MAY 30, 2025\***

PART NUMBER	MODEL	COLOR	QTY DISCOUNT	DISCOUNT	QTY DISCOUNT	DISCOUNT
H87A578-4	X-LARGE MODIFIED	BLACK	1 TO 9	10%	10+	30%
H87A578-WT1-4	X-LARGE MODIFIED	WHITE	1 TO 5	10%	6+	25%

\*Prices Subject to Change without Notice



## CLEARLY SEE YOUR SCREEN WITH **SHADE AIDE®** TECHNOLOGY!

No more glares or reflections on sunny days to prevent you from getting your work done effectively.

EMAIL US AT [INFO@SHADEAIDE.COM](mailto:INFO@SHADEAIDE.COM)

# shade aide®



## ARMOR UP!

### METALLIC/NON-METALLIC ENCLOSURES ARE NO PROBLEM FOR SHADE AIDE®

Whether your control panel is metallic or non-metallic, the **SHADE AIDE®** is fully compatible. Simply use our stencil as a guide to drill holes into the control panel door and install the device!



SUN



WATER



DUST

# CERTIFIED PROTECTION

TO PROTECT YOUR HMIs  
FROM DUST AND WATER!



## NOW IP66 & UL RATED

Sun, dust or water, **SHADE AIDE®** has you covered.  
Every **SHADE AIDE®** now comes standard with IP66 quality to protect against  
dust and water, in addition to its shading capabilities.

Choose between the UL ratings of NEMA 4 or NEMA 4x, and let **SHADE AIDE®** do the rest  
with its IP66 rating. Select the **SHADE AIDE®** model for your unique HMI today!

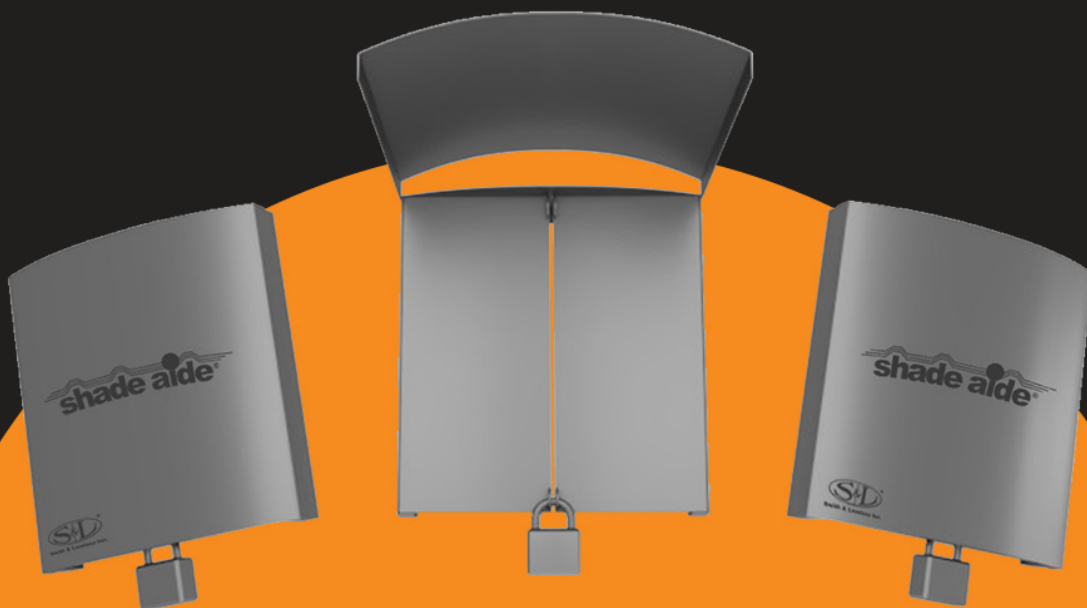


# KEEP SECURITY A PRIORITY!

---

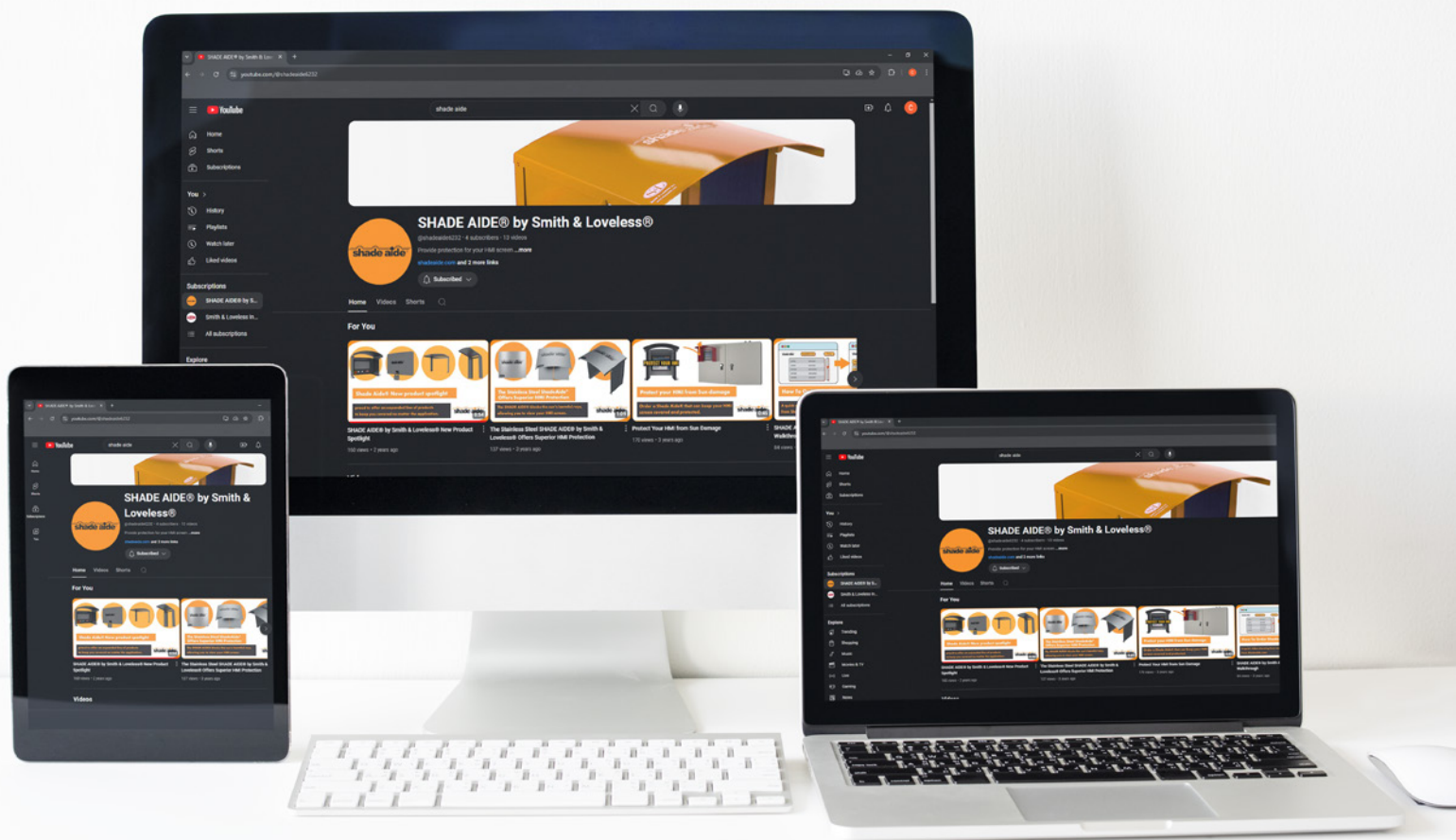
Don't let unsecure systems get in your way!

**SHADE AIDE®** has locking capability to give you peace of mind that your HMI's are safe with the padlock-compatible design. This secure feature keeps out unwanted users to your most important controls. Upgrade your security now when you visit [ShadeAide.com](http://ShadeAide.com)



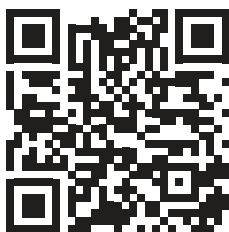
**shade aide®**





# OUR VIDEOS

SCAN HERE



Check out our **SHADE AIDE®** videos to see our different variations, beneficial features, how to install it and more at [ShadeAide.com](https://ShadeAide.com)!

# COMPATIBILITY

Find the right **SHADE AIDE®** for you. The **SHADE AIDE®** HMI Protector is compatible with many different HMI screens. Just look up your HMI manufacturer and find the **SHADE AIDE®** model that is compatible. No need to look at standard, one-size-fits-all options.

You asked. We heard. Your favorite **SHADE AIDE®** now has UL and CUL listing.

Follow us on social media for the latest updates!



Shade Aide



Shade Aide



Shade Aide® by Smith & Loveless®



See all compatibility charts online at [shadeaide.com](http://shadeaide.com)!

**shade aide®**



Smith & Loveless Inc.