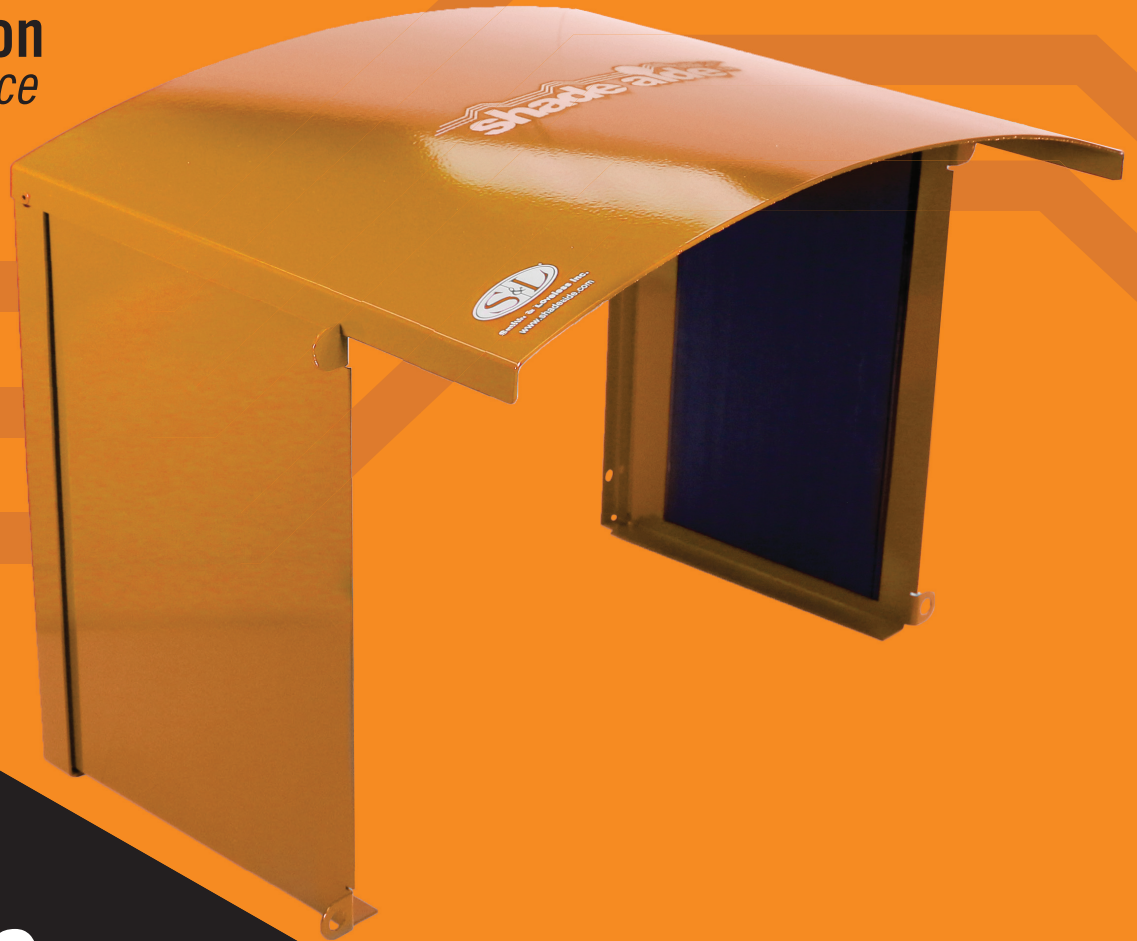




HMI Protection
See the *Difference*



**6 NEW
MODELS**



MODIFIED MINI

MINI TALL

**AND
MORE!**

Look for your HMI model on our
compatibility page to find out what
SHADE AIDE® you need.



Smith & Loveless Inc.
Protecting Water. Protecting People.

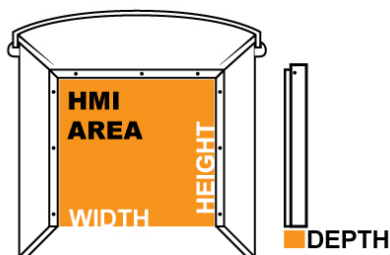


SIZES & COLORS

Built for rugged industrial environments, the **SHADE AIDE®** is sure to fit your HMI whether that is in inches or metric measurements. We'll even customize the **SHADE AIDE®** to your specific HMI size, color, and logo. Select your **SHADE AIDE®** below.



Select Your Maximum HMI Area



XLarge Modified Screen

17" W x 14.25" H
432mm W x 362mm H

Mega Screen

28.562" W x 24.75" H
725mm W x 629mm H

Medium Screen

12" W x 9" H
305mm W x 229mm H

Mini Screen

5" W x 2.875" H
127mm W x 73mm H

Modified Mini Screen

5.75" W x 3.75" H
147mm W x 96mm H

Square Mini Screen

7" W x 7" H
178mm W x 178mm H

Mini Tall

5" W x 12" H
127mm W x 305mm H

Large Deep

15.875" W x 11.25" H x 2" D
403mmW x 286mmH x
51mm D

XLarge Long Screen

22.5" W x 14.25" H
571mm W x 362mm H

High Speed Mega Shallow Screen

19.875" W x 14.25" H
505mm W x 362mm H

Small Screen

9.875" W x 7.25" H
251mm W x 184mm H

Large Modified Screen

13.875" W x 11.25" H
352mm W x 286mm H

XLarge XTall Screen

19.875" W x 18.25" H
505mm W x 463mm H

MEGA Shallow Screen

28.937" W x 24.75" H x 2.5" D
735mmW x 629mmH x 62mmD

Large Screen

15.875" W x 11.25" H
403mm W x 286mm H

Extra Large Screen

19.875" W x 14.25" H
505mm W x 362mm H

High Speed

XLarge Screen

19.875"W x 14.25"H 505mm W
x 362mm H

Custom

Any Size, Any Color + SST

NEMA 4

NEMA 4X

Or order in the custom
color of your choice!

Powder Coated Aluminum



Black



White

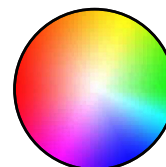


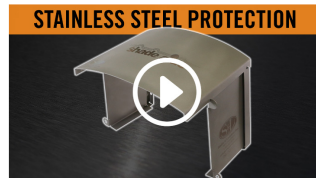
Grey

SST



SST





VIDEOS

Check out our **SHADE AIDE®** videos to see our different sizing and color options, cool features, how to install it and more at ShadeAide.com!

NEW MODELS

SHADE AIDE® is proud to offer an expanded line of products to keep you covered no matter the application. Check out our website for our constantly improving line of products for all of your shady needs.

SHADE AIDE® MINI SCREEN

Just because your screens are small, doesn't mean they don't need protection from the sun.

Mini Screen
5" W x 2.875" H
127mm W x 73mm H



SHADE AIDE® SQUARE MINI

This 7" x 7" square **SHADE AIDE®** has a ton of applications. This specific size is often used as the standard HMI size.

Square Mini Screen
7" W x 7" H
178mm W x 178mm H





SHADE AIDE® MODIFIED MINI

The New Modified Mini **SHADE AIDE®** protects many 3.5" HMI displays with its 5.75" W x 3.75" H size.

Modified Mini Screen

5.75" W x 3.75" H
147mm W x 96mm H

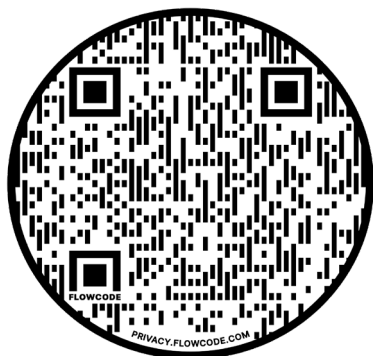


SHADE AIDE® MINI TALL

The Mini-Tall is customizable and, like all models, can have your logo added.

Mini Tall

5" W x 12" H
127mm W x 305mm H



AND MORE!

Check out our other models that will fit your specific need or order a custom size for your unique application.

NEW MODELS CONT.



SHADE AIDE® MEDIUM SCREEN

With its easy-to-use design and snug fit, this medium-sized **SHADE AIDE®** is the ideal choice for anyone looking to keep their HMI screen in top condition.

Medium Screen
12" W x 9" H
305mm W x 229mm H

SHADE AIDE® SQUARE LARGE

Whether you need to protect your screen from the elements or want to keep it looking its best, our square HMI cover is the perfect choice.

Square Large Screen
11.5" W x 11.5" H
293mm W x 293mm H



EASY INSTALLATION

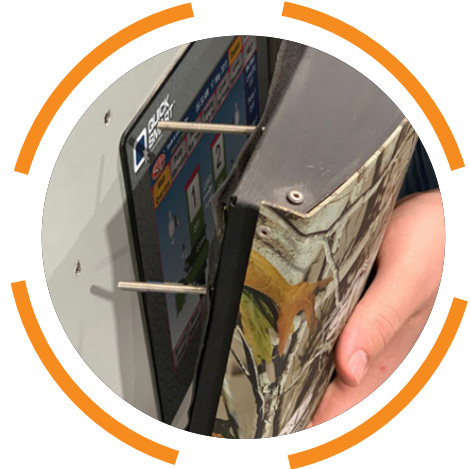
Step 1: Mark holes

Step 2: Drill holes

Step 3: Install **SHADE AIDE®**

Step 4: Test opening and closing

YOU NOW HAVE
INSTANT SHADE.



COMPATIBILITY

Find the right **SHADE AIDE®** for you. The **SHADE AIDE®** HMI Protector is compatible with many different HMI screens. Just look up your HMI manufacturer and find the **SHADE AIDE®** model that is compatible. No need to look at a standard, one-size-fits-all options.



See all compatibility charts
online at shadeaide.com!

You asked. We heard. Your
favorite **SHADE AIDE®** now
has UL and CUL listing.

Follow us on social media
for the latest updates!

